



DATA SHEET

DESCRIPTION

The Plug & Play connectors and boxes are designed to exceed the requirements of ODVA, the connectors meet IP68 environmental sealing ratings and are the ideal choice for a low cost/ easy to use solution in industrial, Fiber to the Antenna (FTTa), or any other harsh environmental application.

The connectors are designed to the IEC 61076-3-106 interface standard which allows mating to other similar mechanical locking systems. Available connectors include LC, SC, and MPO in both UPC and APC polish.

Incorporating Custom cable manufacturing processes, the Plug & Play system yields exceptionally low insertion loss for Singlemode applications and provides connector color coding options for differentiation of OM3 or OM4 constructions.

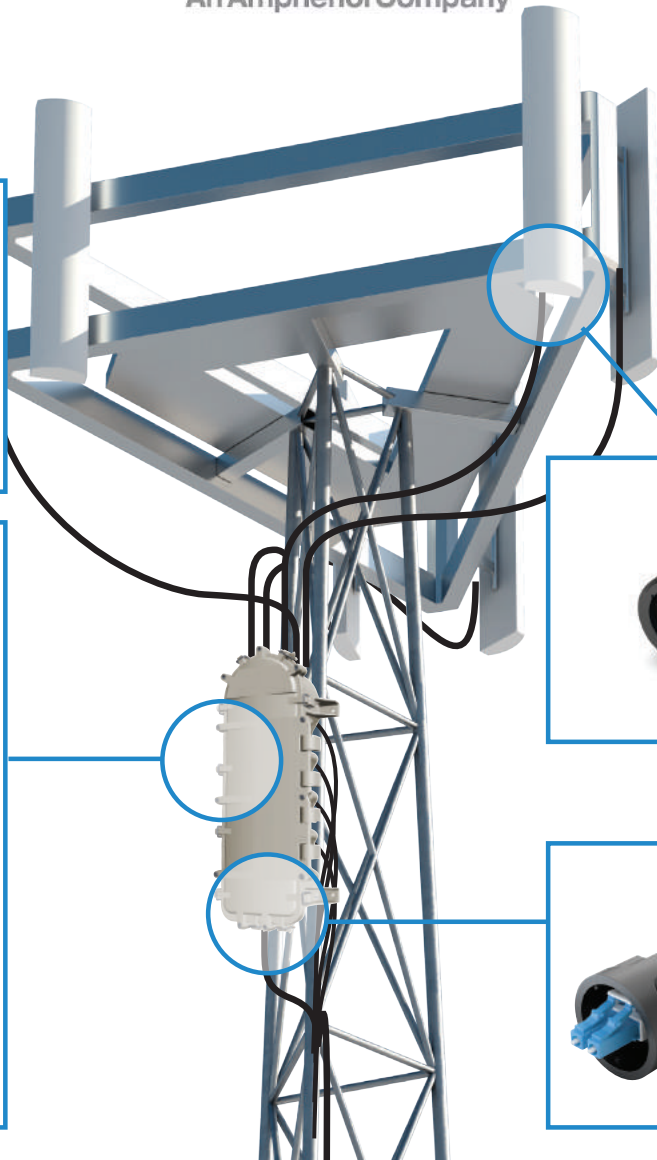
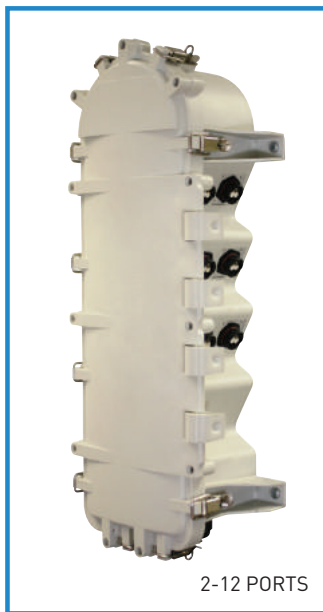
APPLICATIONS

- Mobile Cell Tower Junction Box
- Outdoor DAS LIU Nodes
- LTE FTTa Deployments
- Indoor/ Outdoor Harsh Environment Connectivity

FEATURES AND BENEFITS

- Cost effective compact solution
- IP97 Water Immersion and Dust protection for harsh environments
- OSP operational temperature range -40/+70 C
- Accepts 5-8 mm OD cable with 2-3 mm OD sub units
- Chemical resistance
- Intermatable to other industrial LC adapter per IEC 61076-3-106
- Durable mechanical mating, minimum 500 matings

Plug & Play Fiber Solutions
for LTE, DAS, and
Mobile Cell Tower



OPTICAL CHARACTERISTICS	SINGLE MODE	MULIMODE
For IP-LC Connector	Typical	Typical
Insertion Loss	0.10dB	0.20dB
Return Loss	≥ 55 dB typical for (PC)	
Durability	< 0.02dB typical change 500 matings	
Operating Temperature	-40°C to + 40°C	
Ferrule Hole Size	125.5μ +1/-0 Concentricity ≤ 1μm	127μm
IP Rating	IP 68	

© 2013 Custom Cable. All rights Reserved.

Notice: This document is for informational purposes only and does not set forth any warranty, expressed or implied, concerning any equipment, equipment features, or services to be offered by Custom Cable. Custom Cable reserves the right to make changes to this document at any time, without notice, and assumes no responsibility for its use. This informational document describes features that may not be currently available. Contact Custom Cable's Sales team for information on feature and product availability. Export of technical data contained in this document may require an export license from the US government.