

DATA SHEET

DESCRIPTION

Custom Cable produces corrugated and braided cable assemblies with exceptional RF performance for use over wide frequency ranges and in the most critical network applications. All assemblies are manufactured to the highest standards required of today's 4G LTE and WiMax technologies, remote radio head deployments, and indoor/outdoor DAS installations.

All RF solutions are tested to PIM, VSWR, and DTF per customer requirements and each assembly is uniquely serialized. Assemblies are shipped with hard copy wide band frequency SWEEP test reports. Applicable PIM data is archived per assembly electronically and available for download upon request.

Assemblies are available with short lead times for either standard or custom lengths and are manufactured/ tested by Anritsu trained & certified personnel. Custom assembly kitting per job site is available along with custom labeling and/ or packaging.

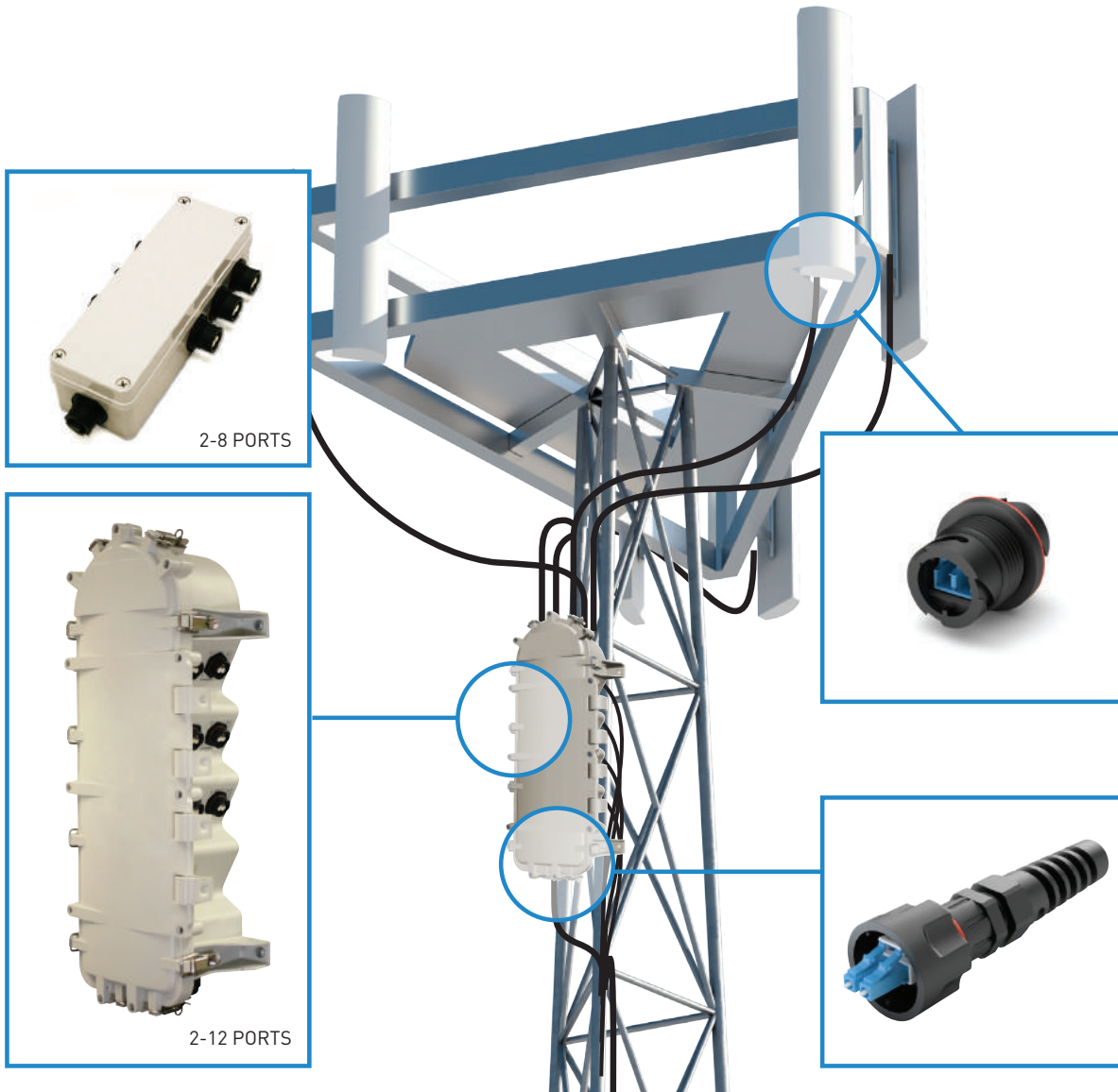
Premium Corrugated & Braided RF Assemblies

APPLICATIONS

- Transmission Line Feeder Cables
- Antenna Jumper Cables
- Indoor/ Outdoor DAS Installations
- Mobile Cell Tower "on wheels" Flexible Applications
- Internal, Tight Radius Combiner Boxes

FEATURES AND BENEFITS

- Low Passive Intermodulation (PIM), VSWR, DTF
- 100% Factory Tested
- Serialized Cable Traceability to Test Data
- Quick Production Lead Times
- Repeatable Automated Termination Processes for Long Term Reliability
- Durable mechanical mating, minimum 500 matings



OPTICAL CHARACTERISTICS	SINGLE MODE	MULIMODE
For IP-LC Connector	Typical	Typical
Insertion Loss	0.10dB	0.20dB
Return Loss	≥ 55 dB typical for (PC)	
Durability	< 0.02dB typical change 500 matings	
Operating Temperature	-40°C to + 40°C	
Ferrule Hole Size	125.5μ +1/-0 Concentricity ≤ 1μm	127μm
IP Rating	IP 68	

© 2013 Custom Cable. All rights Reserved.

Notice: This document is for informational purposes only and does not set forth any warranty, expressed or implied, concerning any equipment, equipment features, or services to be offered by Custom Cable. Custom Cable reserves the right to make changes to this document at any time, without notice, and assumes no responsibility for its use. This informational document describes features that may not be currently available. Contact Custom Cable's Sales team for information on feature and product availability. Export of technical data contained in this document may require an export license from the US government.