

DATA SHEET

DESCRIPTION

Custom Cable offers a wide range of LGX style indoor wall mounted splice enclosures, providing a low profile compact solution to the end user. With the ability to use a full array of adapter types, these enclosures offer a flexible solution for all your project needs. Incorporating a multifunctional enclosure allows easy access during installation or rework with no disturbance of the existing cable or fibers. In addition to the array of adapters, these enclosures also offer multiple cable entry solutions. Fiber cable can be spliced or pre-terminated making this enclosure one of the most flexible on the market.

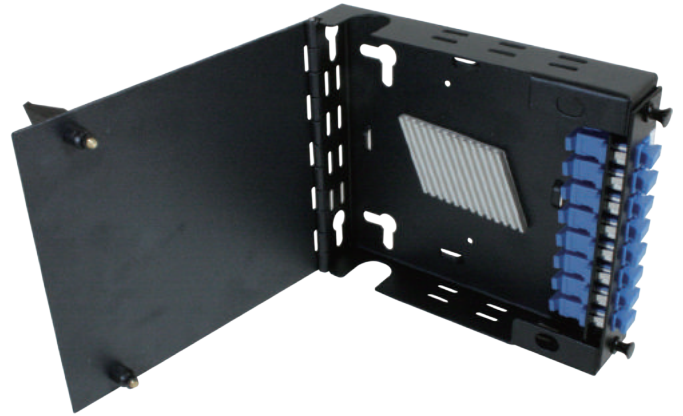
APPLICATIONS

- Data centers, premise installations, telecommunication networks
- Ethernet, Fiber Channel, ATM, LAN, MAN and WAN

FEATURES AND BENEFITS

- Wall mountable
- Multiple adapter options available
- Splice cassette, bridge and tray options available
- Lockable hinged door
- Accepts loose tube and distribution cable
- RoHS, REACH SvHC
- Designed in accordance with TIA/EIA 568.C, ISO/IEC 11801, EN50173, IEC60304, IEC61754, EN297-1

Wall Mount Splice Enclosures



Product Specifications	1 LGX style plate	Up to 2 LGX style plates	Up to 4 LGX style plates
Height	5.5" (140mm)	6.45" (164mm)	11.42" (290mm)
Width	6.34" (161mm)	12.32" (313mm)	14.25" (362mm)
Depth	1.25" (32mm)	4.72" (120mm)	4.21" (107mm)
Net weight	1.3lbs (0.6kg)	7 lbs (3.2kg)	10lbs (4.6kg)
Suitable for adapter type	LGX / MTP Cassettes	LGX / MTP Cassettes	LGX / MTP Cassettes
Number of module positions	1	2	4
Material	Cold-rolled steel	Cold-rolled steel	Cold-rolled steel
Material thickness	2.5mm	2.5mm	2.5mm
Material finish	Powder coating	Powder Coating	Powder Coating
Color	RAL 9004	RAL 9004	RAL 9004
Operating temperature	-40°C to +60°C (-40F to +140F)	-40°C to +60°C (-40F to +140F)	-40°C to +60°C (-40F to +140F)
Designed in accordance with	TIA/EIA 568.C, ISO/IEC 11801, EN50173, IEC60304, IEC61754,EN297-1	TIA/EIA 568.C, ISO/IEC 11801, EN50173, IEC60304, IEC61754,EN297-1	TIA/EIA 568.C, ISO/IEC 11801, EN50173, IEC60304, IEC61754,EN297-1
Compliant to	RoHS, Reach/SVHC	RoHS, Reach/SVHC	RoHS, Reach/SVHC

© 2013 Custom Cable. All rights Reserved.

Notice: This document is for informational purposes only and does not set forth any warranty, expressed or implied, concerning any equipment, equipment features, or services to be offered by Custom Cable. Custom Cable reserves the right to make changes to this document at any time, without notice, and assumes no responsibility for its use. This informational document describes features that may not be currently available. Contact Custom Cable's Sales team for information on feature and product availability. Export of technical data contained in this document may require an export license from the US government.